



PRE-CAST MOULDS & CUSTOM FABRICATION

ALLMARC INDUSTRIES PVT. LTD.

PEPSCON 2022



Agenda

- Introduction
- Growth since inception
- Executed Projects
- Competency
- Other Products
- Contact Details



Introduction

ALLMARC, an INDIAN leader in Manufacturing and Exporting Products for Industrial, Construction and Infrastructure Projects, With Export capability in all over the World, Provides **End to End Solution (From Design to Erection)** for your Project Requirements.

We Have a Strong Local Presence in INDIA with More than **250 People** are working under a Plant having capacity of **1,50,000 Square Foot area** Equipped with Latest CNC Punching, Bending, Cutting Machinery, CNC Laser cutting Machine for Plate and tube, along with Latest manual and robotic Welding Technology.

With More than **100 Indian Clients** and **20 International Clients**, ALLMARC Generated Turnover of **₹ 700 Million in 2020-22**



Our Certifications



- **ISO 9001 : 2015** for Quality Management System
- **ISO 45001 : 2018** for Occupational Health & Safety
- Applied for **EN 1090 Part 2** for Structural Fabrication, including **ISO 3834 Part 2** for Fusion Welding

Growth

Since Inception

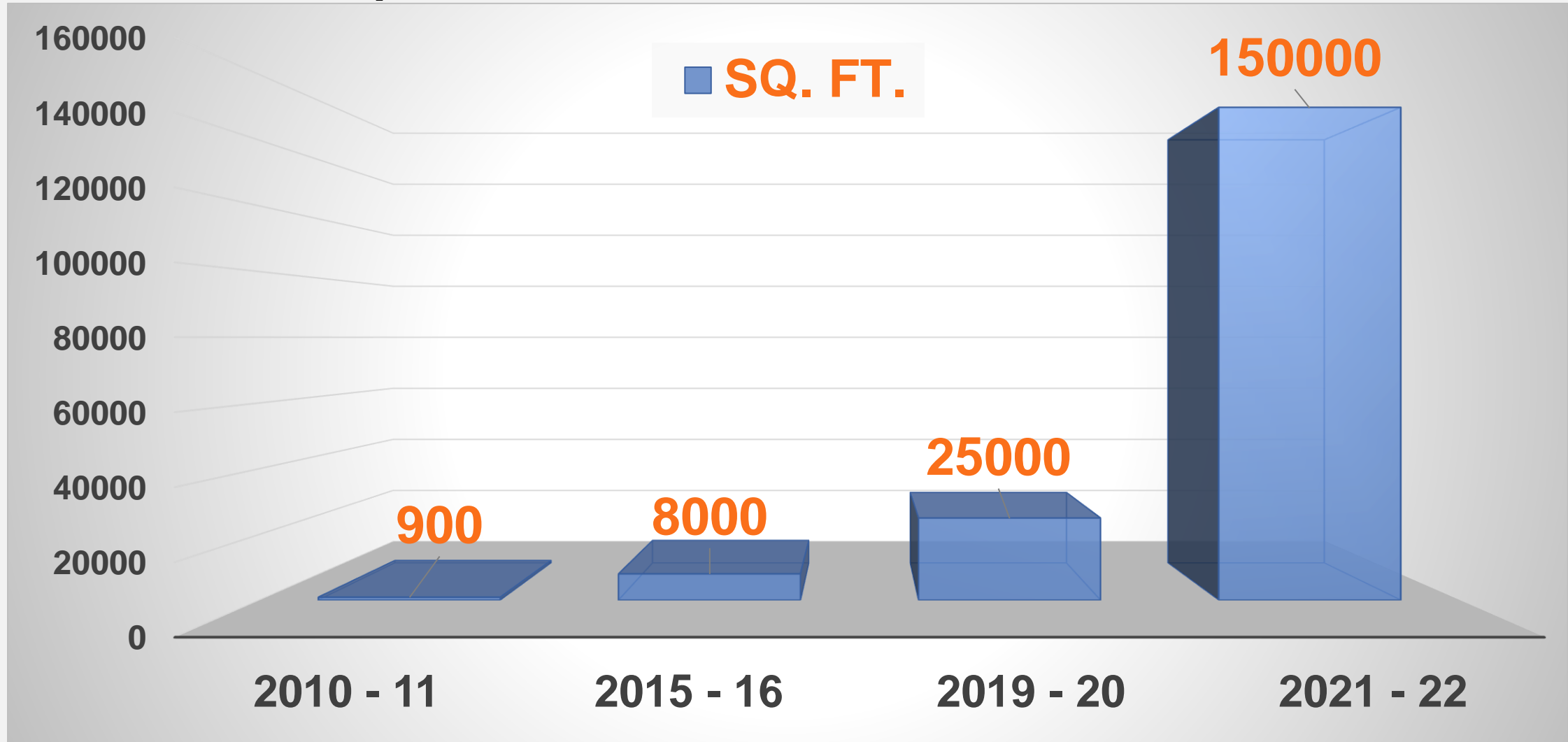
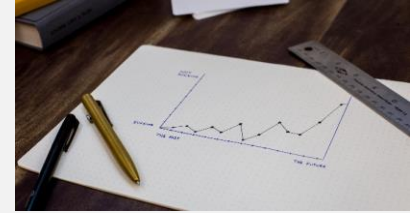
SUCKING

THE PAST

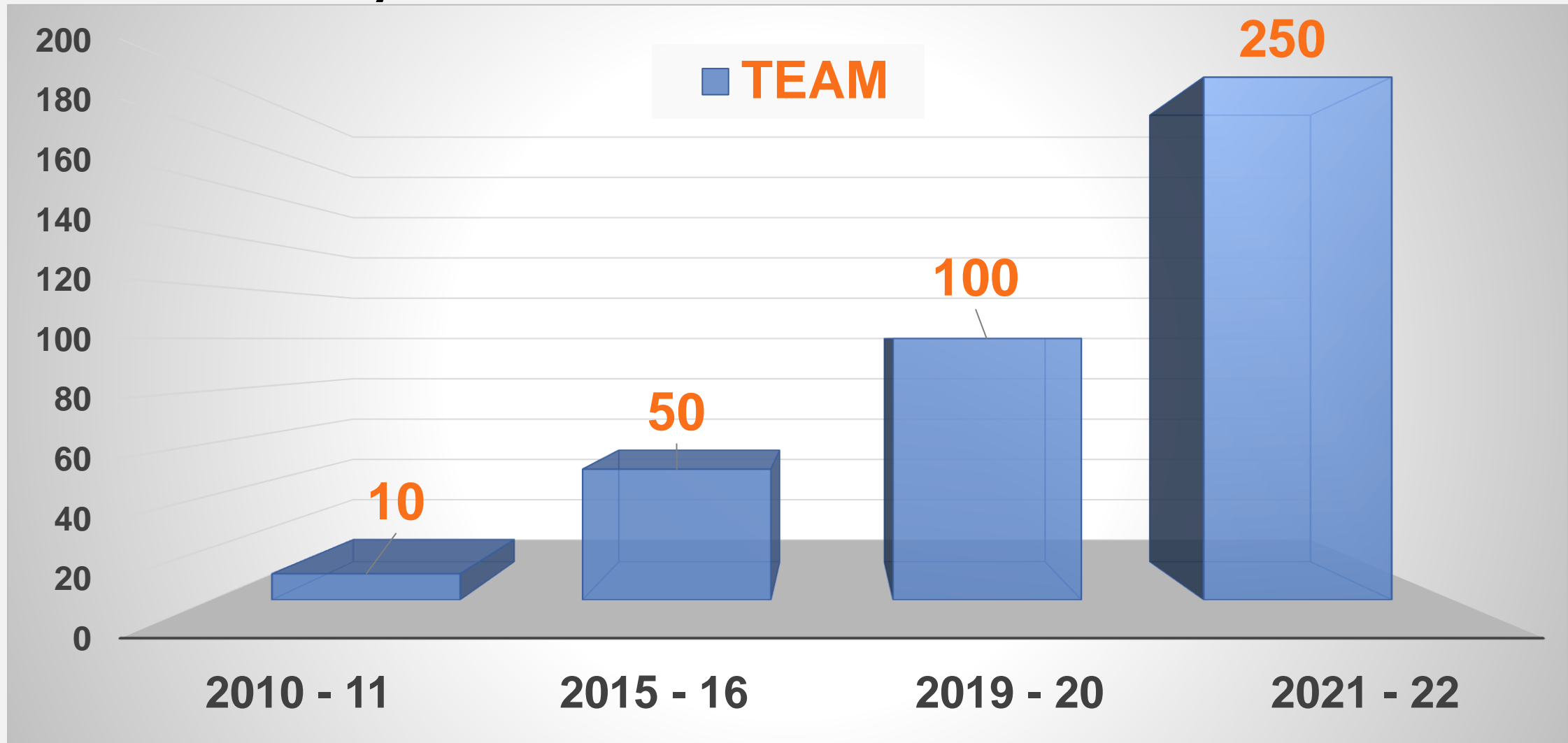
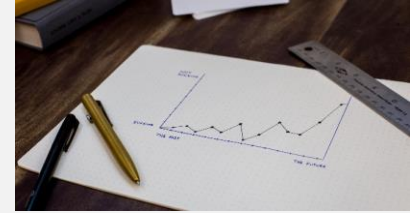
THE FUTURE

ALLMARC INDUSTRIES PRIVATE
LIMITED.

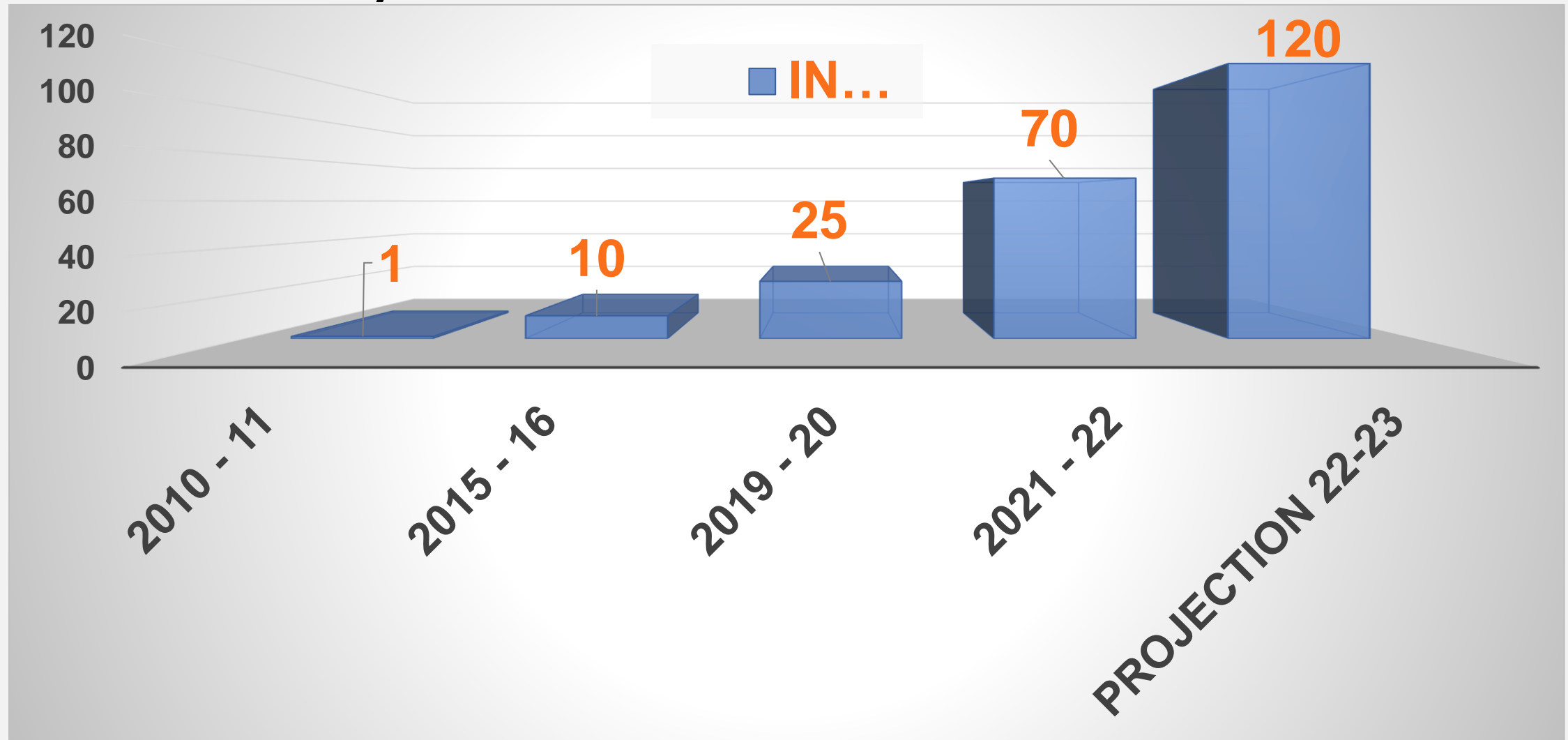
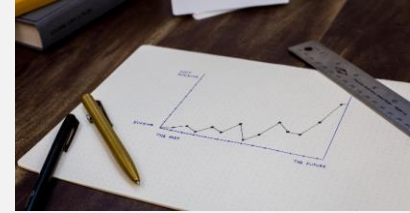
Growth by FACTORY AREA



Growth by TEAM STRENGTH



Growth by REVENUE



INTERNATIONAL CLIENTS



DOMESTIC CLIENTS



An aerial photograph of a construction site, showing a large concrete slab with a grid of rebar and numerous vertical rebar protrusions. A group of seven construction workers in safety vests and hard hats stands in a line on the slab. A large, dark blue hexagonal overlay with a white border is centered over the image, containing the text 'EXECUTED PROJECTS' in white and 'ALLMARC INDUSTRIES PRIVATE LIMITED.' in orange. Several smaller blue and orange hexagons are scattered around the main overlay.

EXECUTED PROJECTS

ALLMARC INDUSTRIES PRIVATE
LIMITED.

Project : L&T MIEP Kota - Construction of 8 Lane Access Controlled Express Way

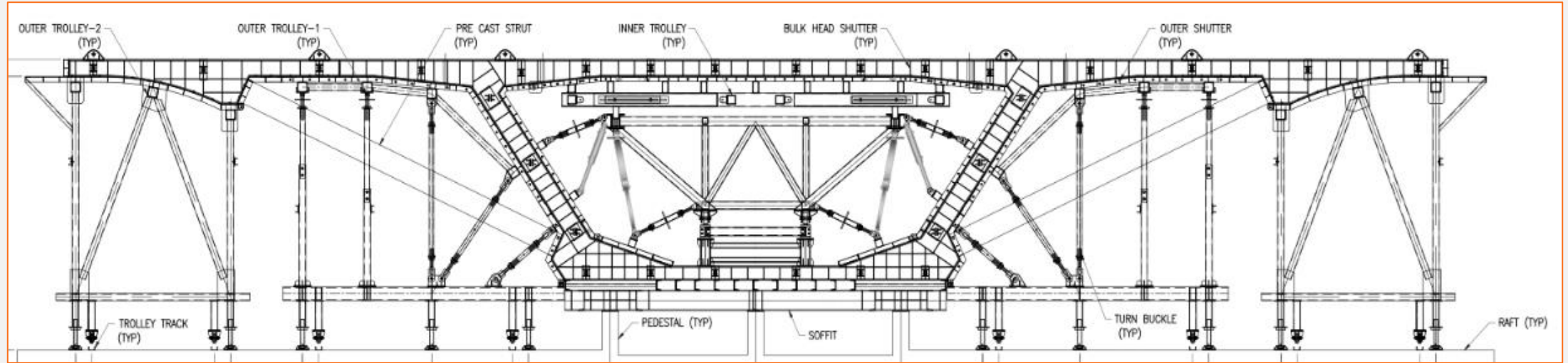
Client : L&T Transport and Infra IC - Kota

Our Roll

- Fabrication of Structure as per drawing, Scope of work - fabrication, primer and painting. Client's scope - Designing and drawing.
- Assembly of mould as per drawing within tolerances and get is certified from client.
- Site supervision up to first two casting of each sets of mould.

Scope	Weightage	Product Specification	Prupose of Requirement
Fabrication and mock assembly of Short line Mould 1 & 2	31 MT	Mould size : 4 Mtr height x 3 Mtr wide x 26Mtr long	For Under and over bridge stucture for Animal Pass situated at Lakheri, Bundi Distict Near by 80 KM from Kota
	31 MT		
Fabrication and mock assembly of Long line Mould 1 & 2	192 MT	Mould size : 4 Mtr height x 3 Mtr wide x 26Mtr long	
	192 MT		
Total Work	446 MT	Duration - 6 Months	

Project : L&T MIEP Kota - Construction of 8 Lane Access Controlled Express Way



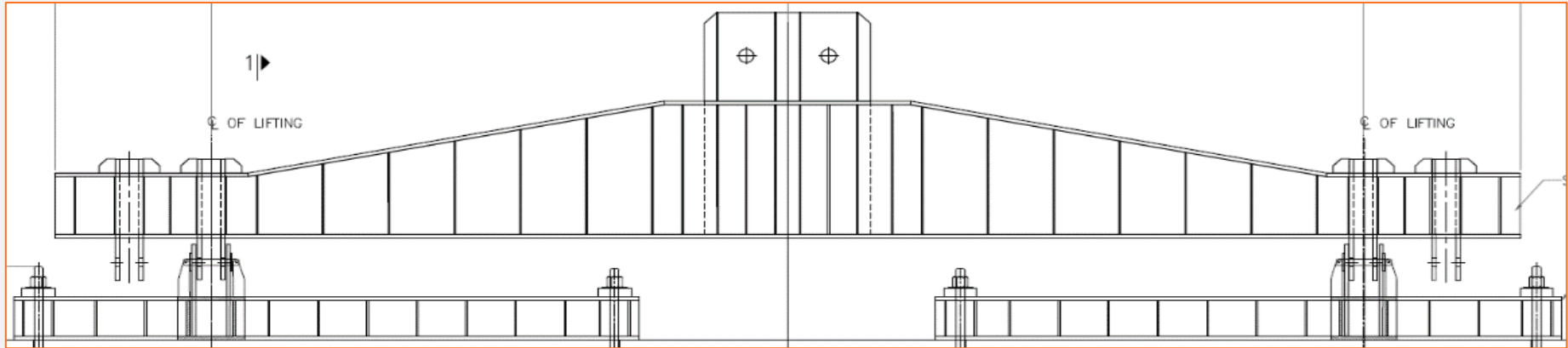
Project : L&T MIEP Kota - Construction of 8 Lane Access Controlled Express Way



Project : L&T MIEP Kota – Strong Back for Precast Element

Client : L&T Transport and Infra IC

- Our Roll**
- Fabrication of Structure as per drawing, Scope of work - fabrication, primer and painting.
 - Client's scope - Designing and drawing.



Project : L&T MIEP Kota – Strong Back for Precast Element

Client	L&T Transport and Infra IC		
Project	L&T MIEP Kota - Strongback for Precast element - 60MT load Capacity		
Scope	Weightage	Product Specification	Prupose of Requirement
Fabrication of Strongback 1 & 2	13 MT	E350 B0 grade material	60MT precast bridge element handling purpose
	13 MT		
Total Work	26 MT	Duration - 1 Week	



Project : Twin cell Long Line Mould – C6 Package

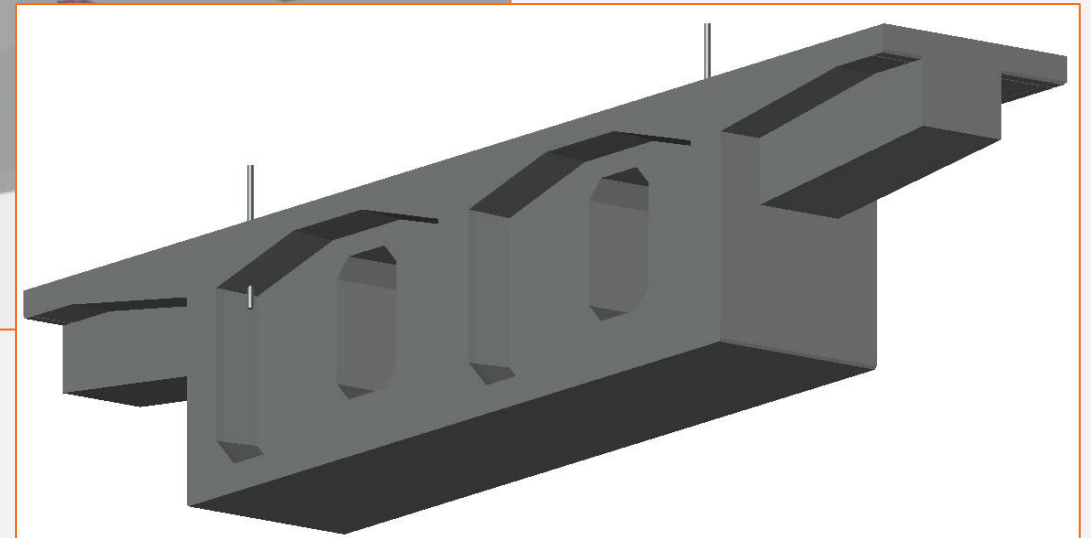
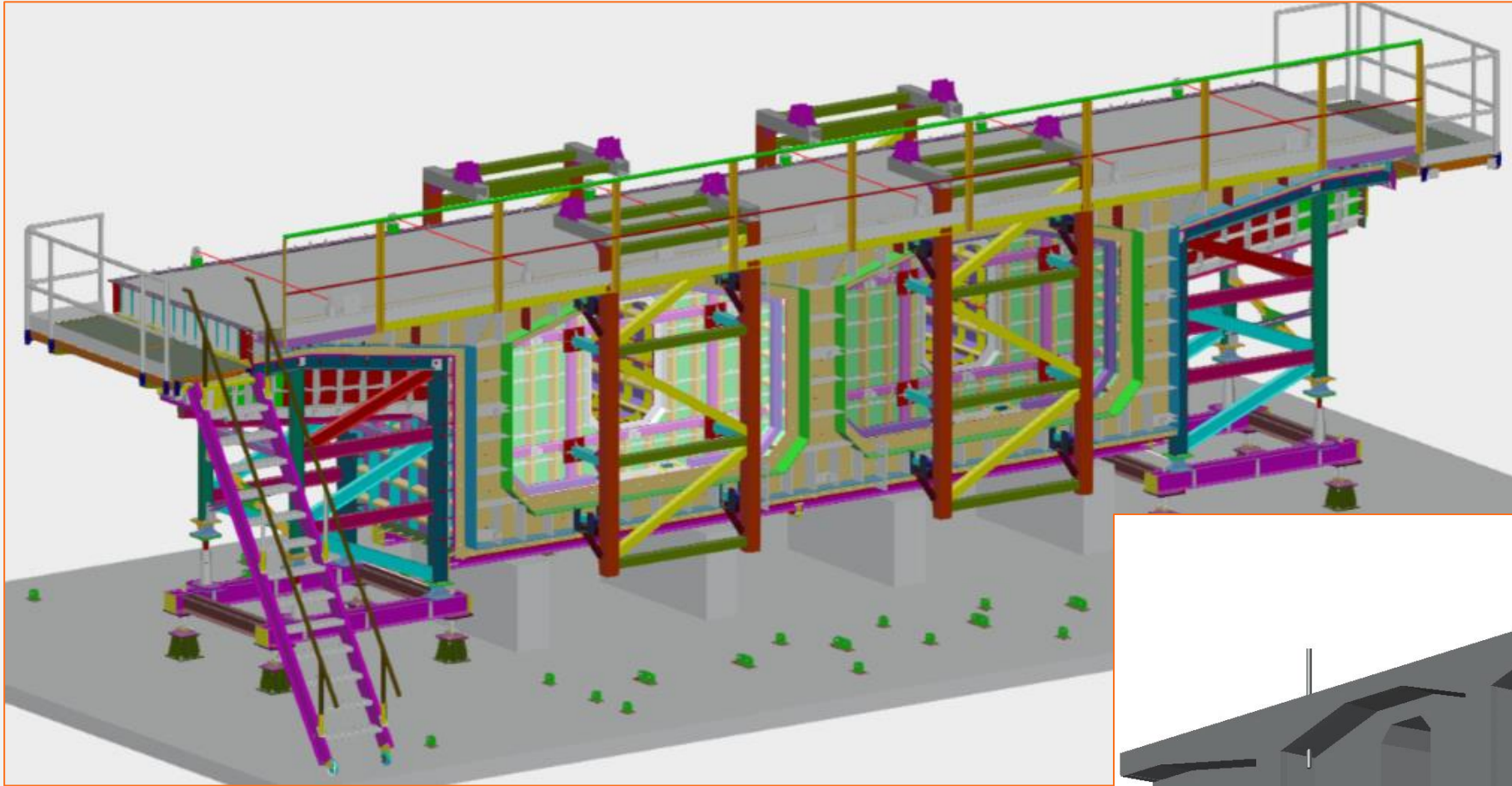
Client : L&T Transport and Infra IC

Our Roll

- Design, Fabrication of Structure as per drawing, Scope of work - fabrication, primer & painting.
- Assembly of mould as per drawing within tolerances and get is certified from client.
- Site execution up to first two casting of each sets of mould.

Client	L&T Transport and Infra IC						
Project	Fabrication and Mock up Assembly of Twincell Long line mould - C6 Package						
Scope	Product Specification	Prupose of Requirement	Weightage	Duration (Days)	Start Date	End Date	Productivity
Fabrication of Twincell PHS	Long line bridge mould	39 Mtr span long line mould including PHS, IDS & Running segments	210	55	10-01-2022	06-03-2022	3.27
Fabrication of Twincell IDS							
Fabrication of Twincell Running							
Total Work			210	55			

Project : Twin cell Long Line Mould – C6 Package



Project : Twin cell Long Line Mould – C6 Package



Project : Twin cell Long Line Mould – C6 Package

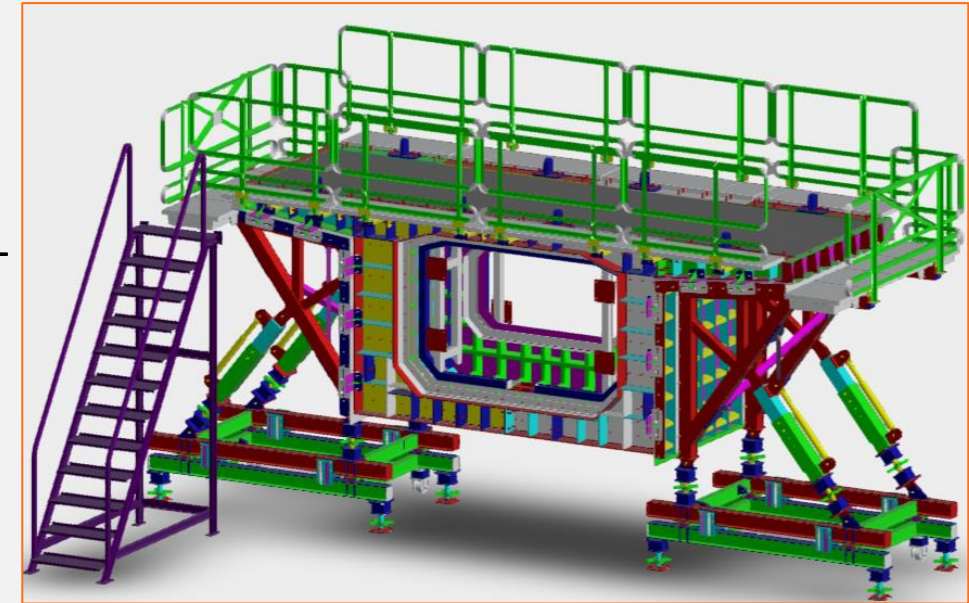


Project : SMD LONG LINE MOULD – C6 PACKAGE

Client : L&T Transport and Infra IC

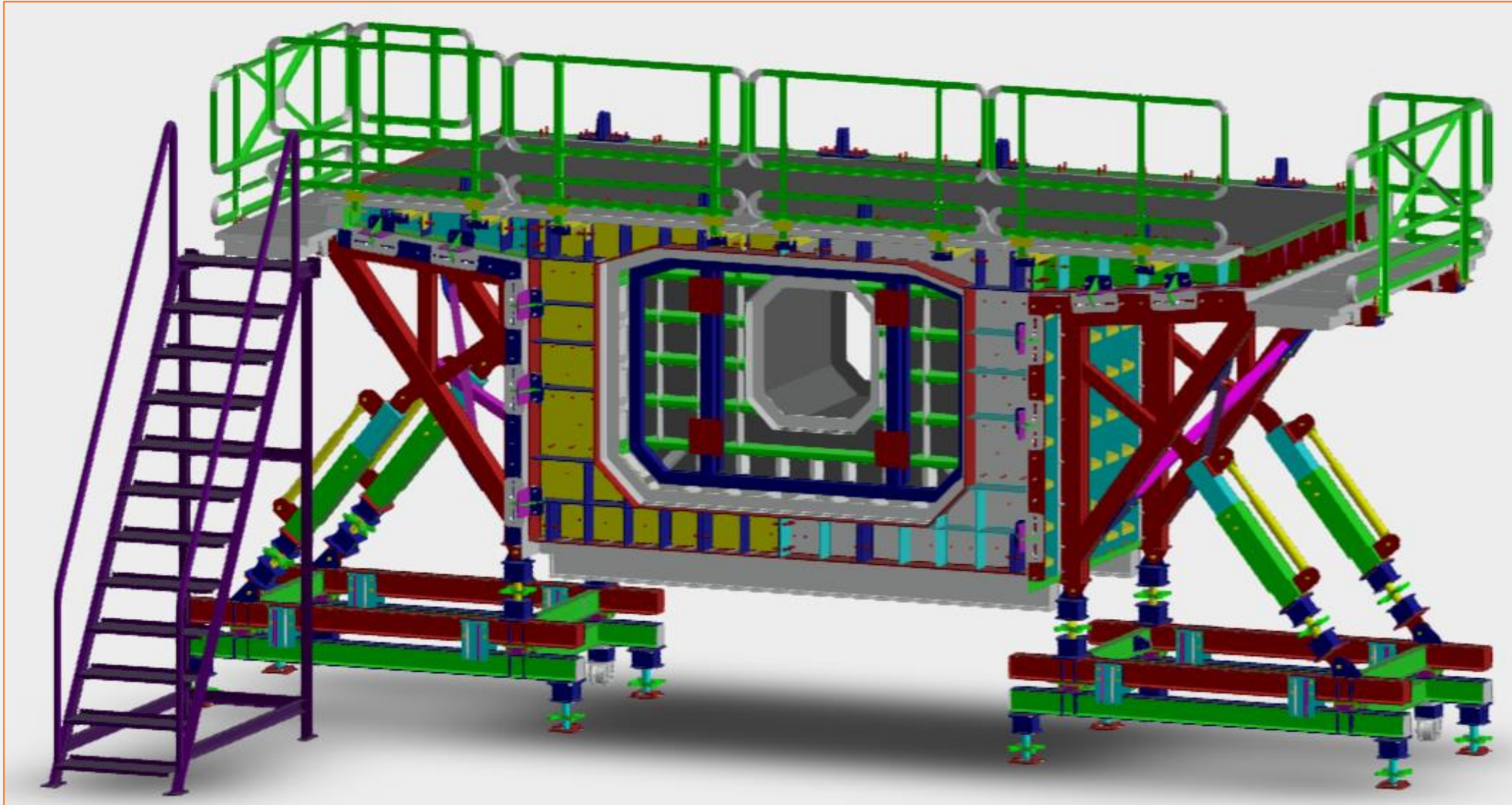
Our Roll

- Design, Fabrication of Structure as per drawing, Scope of work - fabrication, primer & painting.
- Assembly of mould as per drawing within tolerances and get is certified from client.
- Site execution up to first two casting of each sets of mould.



Client	L&T Transport and Infra IC						
Project	Fabrication and Mock up Assembly of SMD Long line mould - C6 Package						
Scope	Product Specification	Prupose of Requirement	Weightage	Duration (Days)	Start Date	End Date	Productivity
Fabrication of SMD PHS	Long line bridge mould	39 Mtr span long line mould including PHS, IDS & Running segments	110	30	22-02-2022	24-03-2022	3.67
Fabrication of SMD IDS							
Fabrication of SMD Running							
Total Work			110	30			

Project : SMD LONG LINE MOULD – C6 PACKAGE



Project : SMD LONG LINE MOULD – C6 PACKAGE



Project : PIER – PIER CAP, C6 PACKAGE – SECTION 1, 2 & 3

Client : L&T Transport and Infra IC

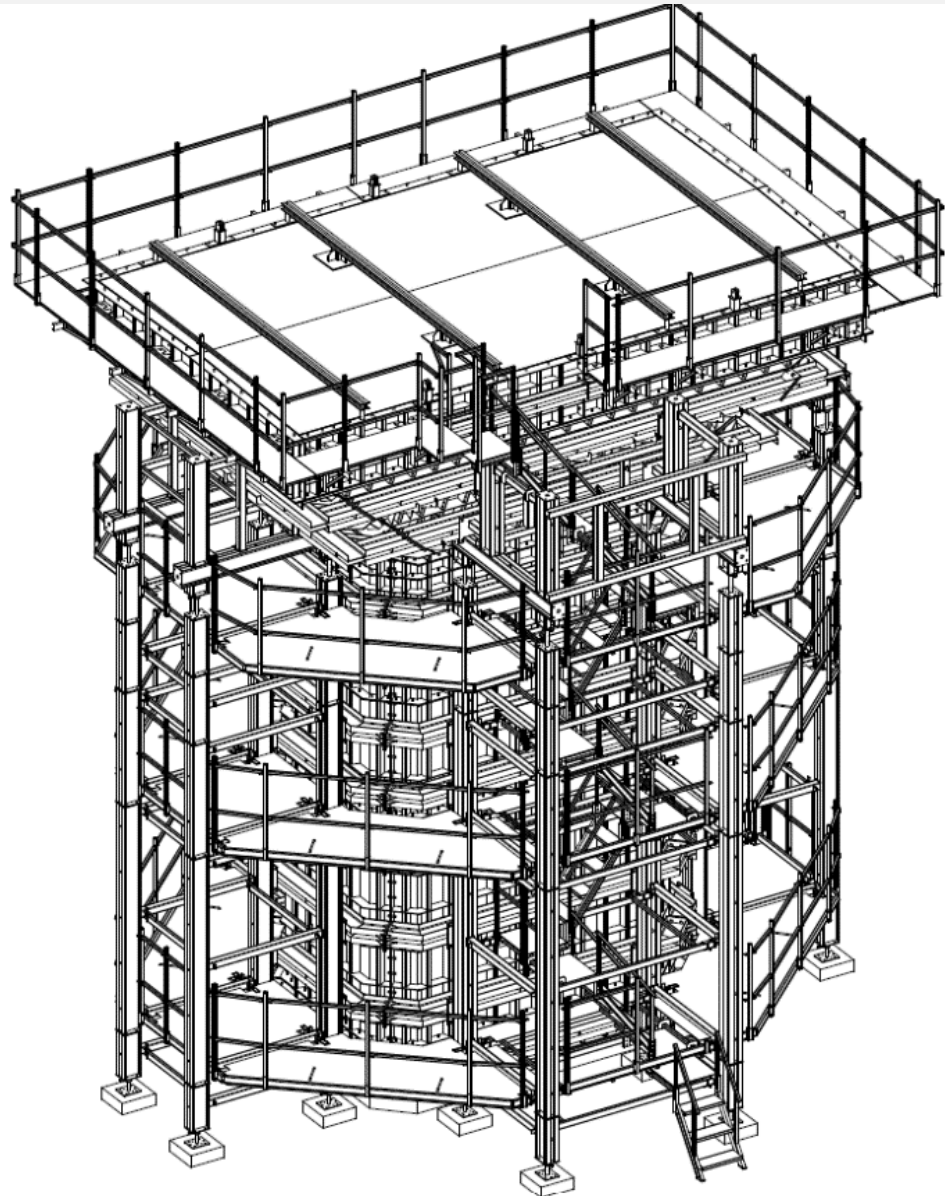
Our Roll

- Design, Fabrication of Structure as per drawing, Scope of work - fabrication, primer & painting.
- Assembly of mould as per drawing within tolerances and get is certified from client.
- Site supervision up to first two casting of each sets of mould.

Client	L&T Transport and Infra IC		
Project	C6 Package - Section 1 (Vadodara), Section 2 (Aanand) & Section 3 (Nadiad)		
Scope	Weightage	Product Specification	Prupose of Requirement
Fabrication and Mock up Assembly of Pier - Pier Cap 15 Sets - C6 Package	49 MT X 15 Sets	Pier and Pier Cap structure for Nadia, Aanand, Vadodara	6 Mtr to 10 Mtr hieght pier for elevated track of Bullet train
Total Work	735 MT	Duration - 3 sets in 1 month	

Client	L&T Transport and Infra IC		
Project	C6 Package - Section 1 (Vadodara), Section 2 (Aanand) &		
Scope	Weightage	Product Specification	Prupose of Requirement
Fabrication and Mock up Assembly of Pier - Pier Cap (3x4) 3 Sets - C6 Package	70 MT X 3 Sets	Pier and Pier Cap structure for Nadia, Aanand, Vadodara	6 Mtr to 14 Mtr hieght pier for elevated track of Bullet train
Total Work	210 MT	Duration - 3 sets in 1 month	

Project : PIER – PIER CAP, C6 PACKAGE – SECTION 1, 2 & 3



Project : PIER – PIER CAP, C6 PACKAGE – SECTION 1, 2 & 3



Project : Mould For U Drain Duct

Client : PSP Projects Limited



Project : I Girder Mould for 60 Mtr. Span

Client : PSP Projects

Our Roll

- Fabrication of Structure as per drawing, Scope of work - fabrication, primer & painting.
- Assembly of mould as per drawing within tolerances and get is certified from concern authorities.

Client	PSP		
Project	I - Girder Mould for 60 Mtr span		
Scope	Weightage	Product Specification	Purpose of Requirement
Fabrication & assembly of I Girder 60 Mtr span	42 MT	Mould size : 1.25 Mtr height x 0.85 Mtr wide x 60Mtr long	Pier to pier I Girder
Total Work	42 MT	Under Progress	



Project : I Girder Mould for 60 Mtr. Span



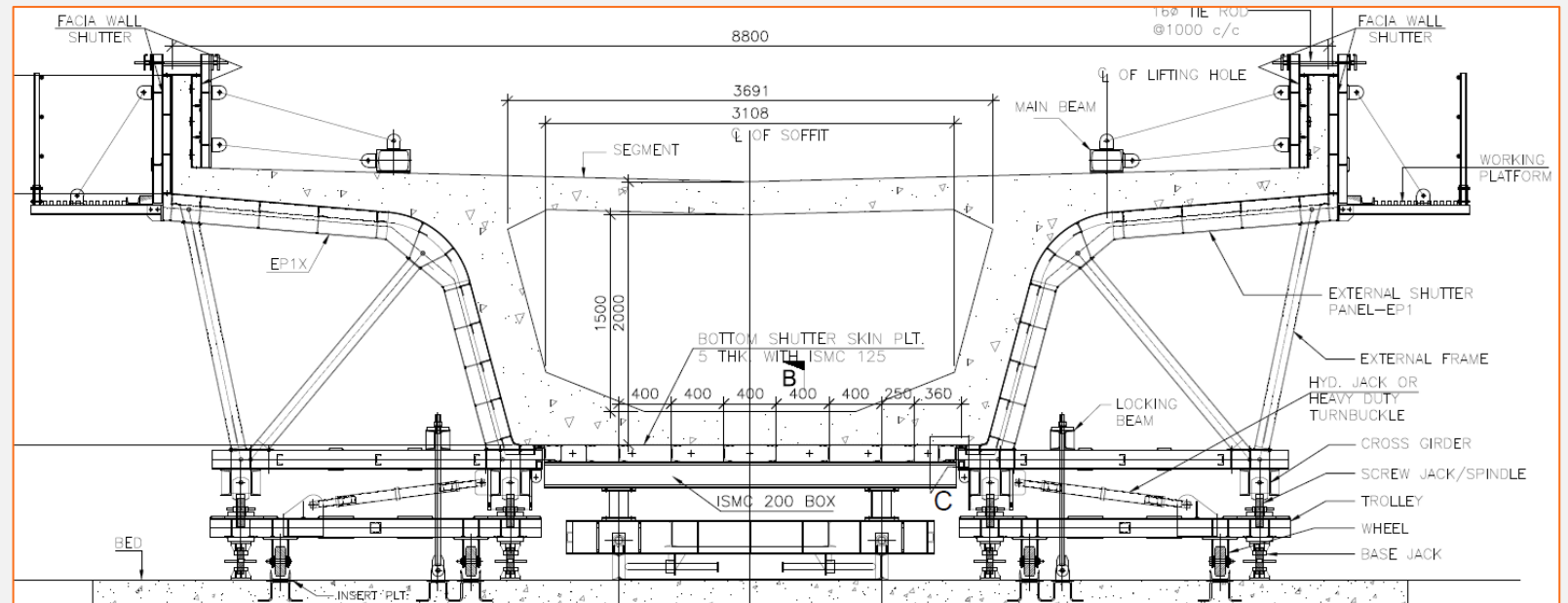
Project : Curve Bed Long Line for Pune Metro Line

Client : Tata Projects Limited

Our Roll

- Fabrication of Structure as per drawing, Scope of work - fabrication, primer & painting.
- Assembly of mould as per drawing within tolerances and get is certified from client.
- Site supervision up to first casting of each sets of mould.

Client Project	TATA Projects Ltd. Curve bed Long line		
Scope	Weightage	Product Specification	Purpose of Requirement
Pune Metro - Fabrication of Curve bed Long line	75 MT x 2 Nos.	Mould size : 2.8 Mtr height x 2.5 Mtr wide x 30Mtr long	Bridge mould
Total Work	150 MT		



On Going Project

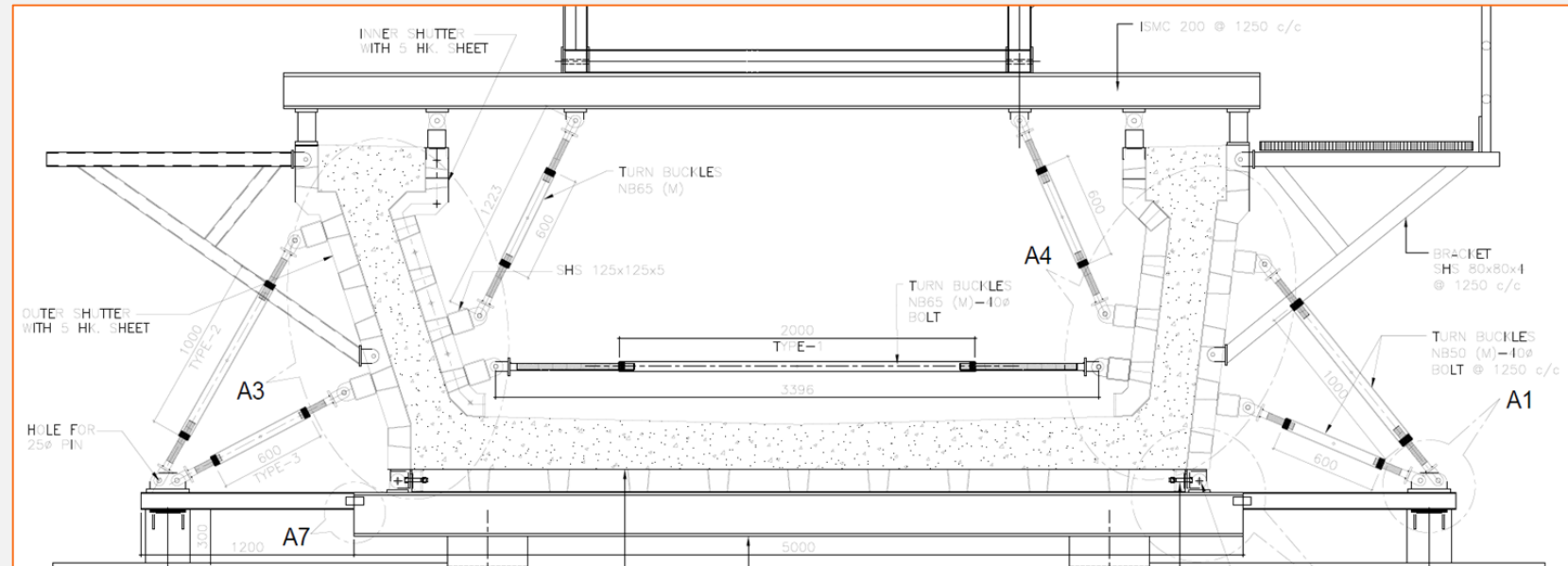
Project : U Girder Mould

Client : KEC International

Our Roll

- Fabrication of Structure as per drawing, Scope of work - fabrication, primer & painting.
- Assembly of mould as per drawing within tolerances and get is certified from client.
- Site supervision up to first casting of each sets of mould.

Client	KEC International		
Project	Fabrication of U - Girder mould		
Scope	Weightage	Product Specification	Purpose of Requirement
U Girder Mould	230 MT	Mould size : 1.8 Mtr height x 5 Mtr wide x 25Mtr long	U Drain mould
Total Work	230 MT		



On Going Project



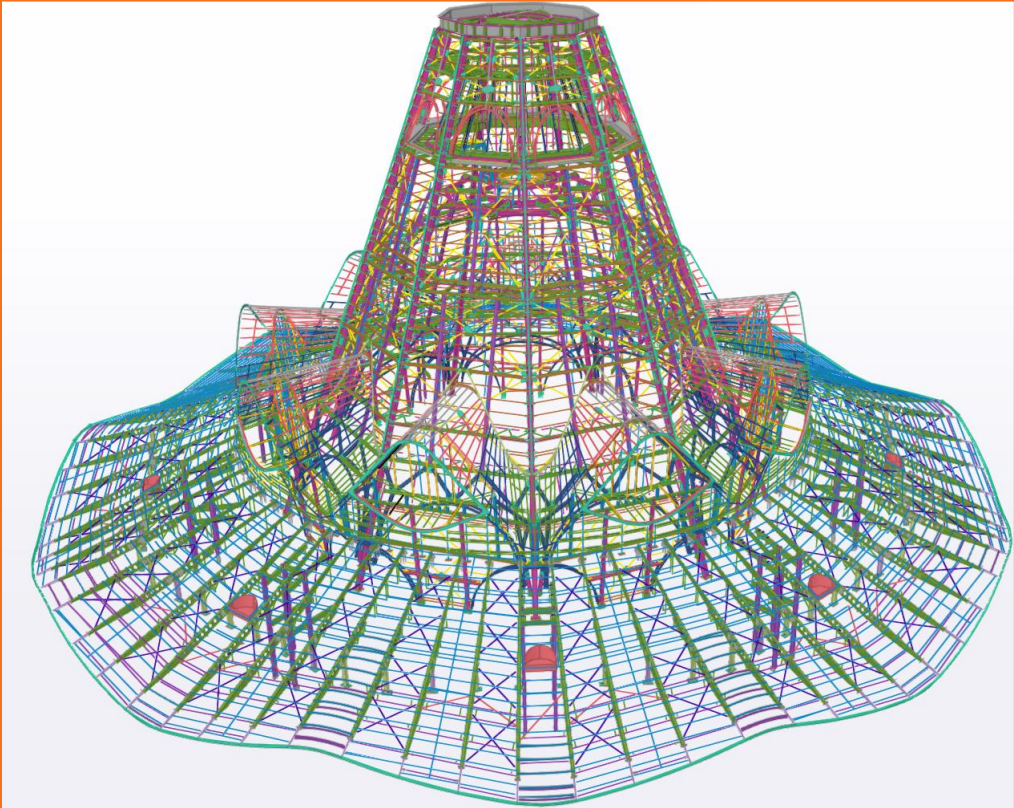
Other
Structural
Fabrication
Projects

ALLMARC INDUSTRIES PRIVATE
LIMITED.

Project : Baha'i House of Worship

Client : Rankin Eng. Consultant

Client	Rankin Engg. Consultants		
Project	Bahá'í House of Worship (BHW - Congo)		
Fabrication Scope	Weightage	Product Specification	Purpose of Requirement
Dome	119 MT	26Mtr height and 28Mtr circular structure with complex fabrication	Warship hour in South Africa - Congo
Rack wall	16 MT		
Upper Canopy	60 MT		
Lower Canopy	26 MT		
Total Work	221 MT	Duration - 6 Months including assembly mockups of critical structure	



Project : Baha'i House of Worship



Our Roll

- Design, Fabrication of Structure as per drawing, Scope of work - fabrication, blasting, primer & painting.
- Assembly of mould as per drawing within tolerances and get is certified from client.



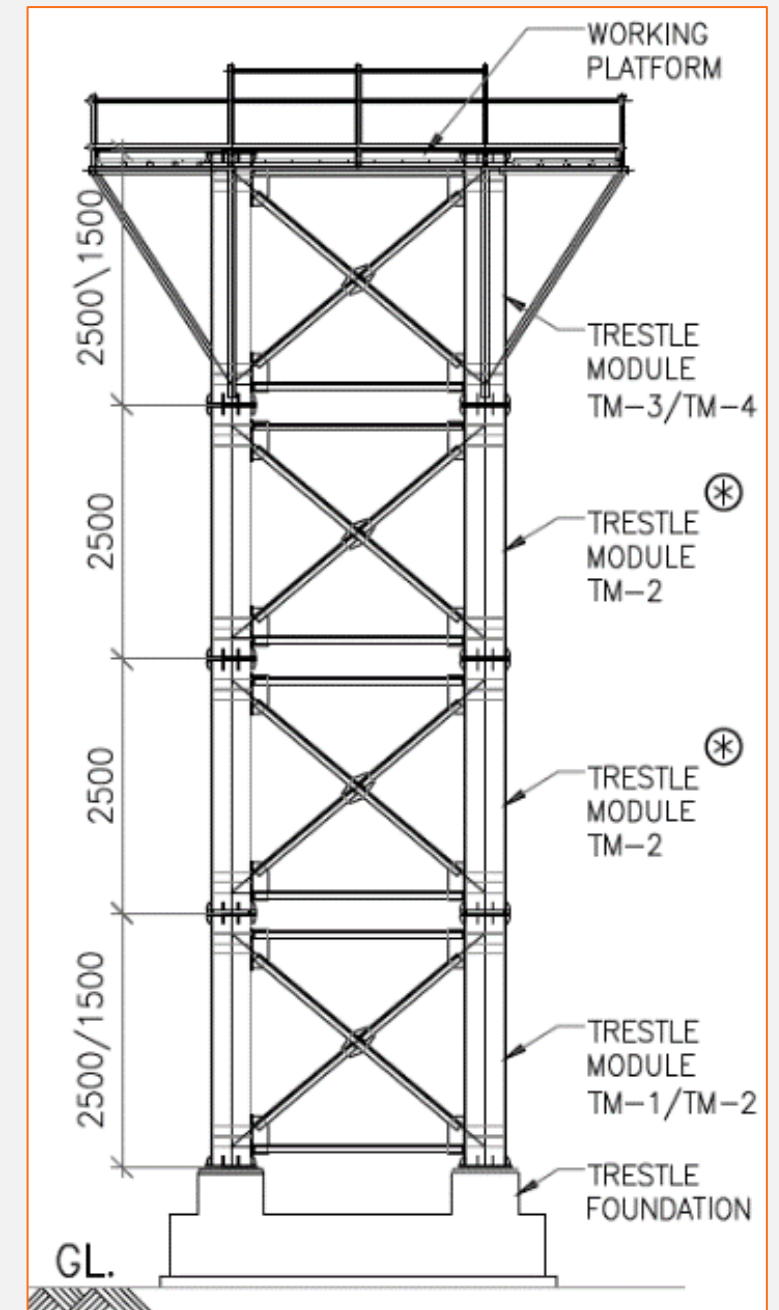
Project : Trestle Module for C6 Package

Client : L&T Transport and Infra IC

Our Roll

- Fabrication of Structure as per drawing, Scope of work - fabrication, primer and painting. Client's scope - Designing and drawing.

Client	L&T Transport and Infra IC		
Project	C6 Package - Section 1 (Vadodara), Section 2 (Aanand)		
Scope	Weightage	Product Specification	Purpose of Requirement
Fabrication of Trestle - C6 Package	108 MT	Temporary structure of Bullet high speed track	240MT load capacity structure for Aanand & Vadodara Bullet High speed track
Total Work	108 MT	Duration - 1 month	



Project : Trestle Module for C6 Package

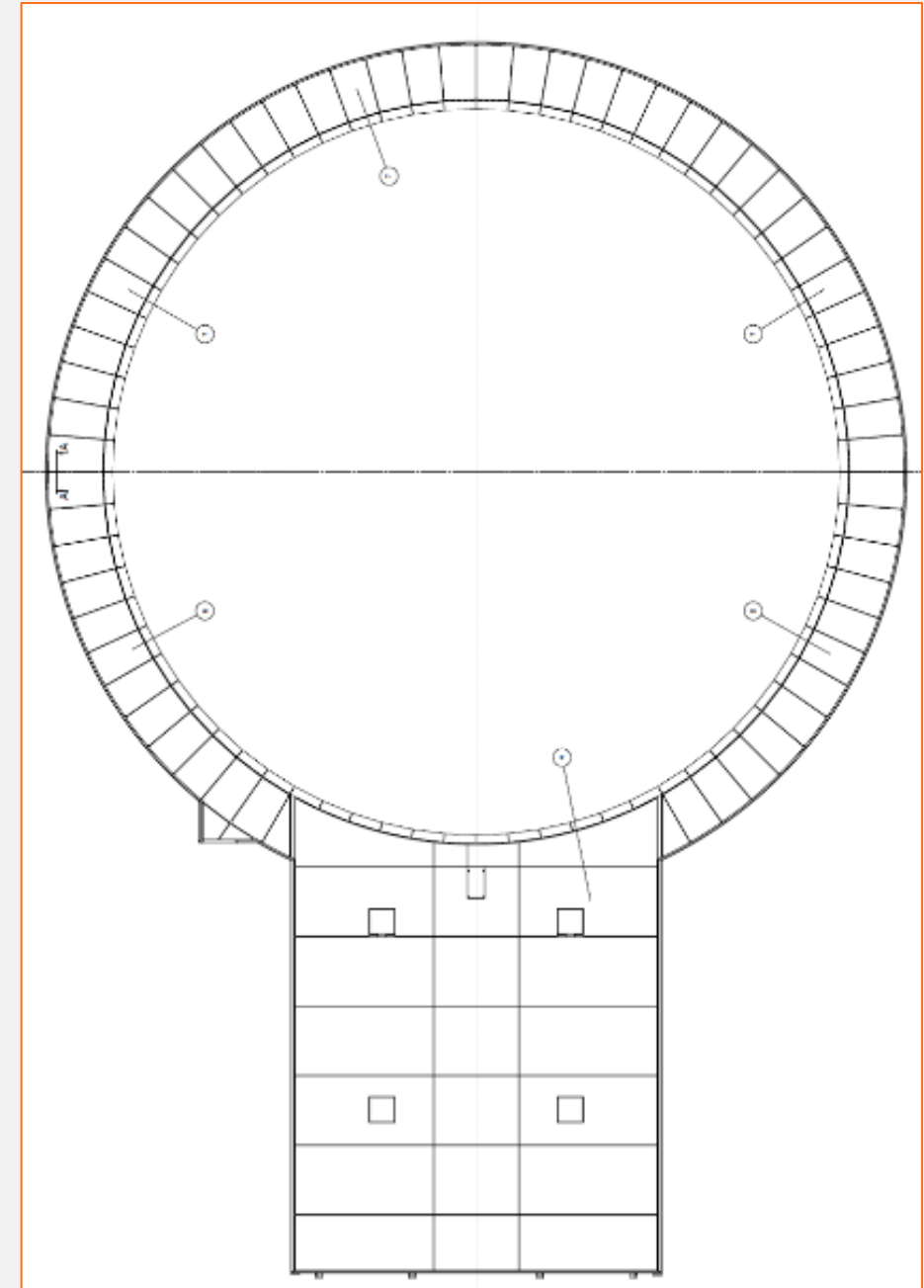


Project : ATI 200, ATI140, ATI110 Platforms

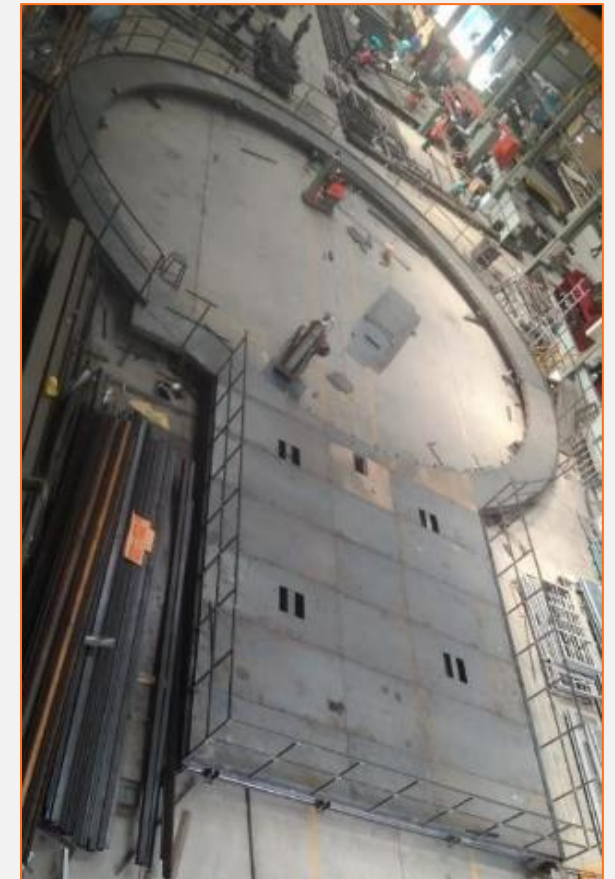
Client : Sacmi Engineering Pvt. Ltd.

Our Roll

- Fabrication of Structure as per drawing
- Assembly of structure as per drawing within tolerances and get is certified from client of TPI authorities.



Project : ATI 200, ATI140, ATI110 Platforms



Client	Sacmi Engineering (I) Pvt. Ltd.		
Project	ATI 200, ATI140, ATI110 Platforms		
Scope	Weightage	Product Specification	Purpose of Requirement
Fabrication & Assembly of ATI 200, ATI 140, ATI 110	22 MT	Supporting sturcture having 18 Mtr dia	Service and access platforms
	18 MT		
	17 MT		
Total Work	57 MT	Duration - 2 Week for each Set	

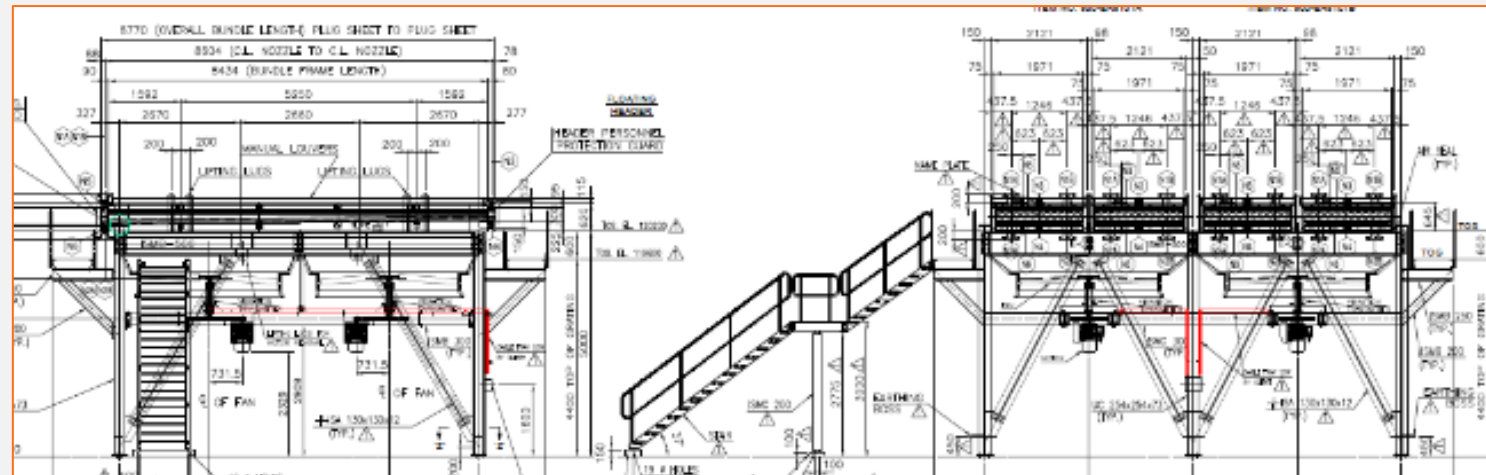
Project : EPC Services for Acrylics / Structure

Client : Patel Airtemp (India) Limited

- Our Roll**
- Fabrication of Structure as per drawing (Condenser Unit)
 - Assembly of structure as per drawing within tolerances and get is certified from client of TPI authorities.



Client	Patels Airtemp (India) Limited		
Project	EPC sevices for Acrylics / Oxo alcohol Project at Gujarat Refinery		
Scope	Weightage	Product Specification	Purpose of Requirement
Fabrication & assembly of supporting structure for Tag 1, 2 & 4	26 MT	Bundle assembly including Plenum Chamber, Motor suspension unit including column, tie and bracing structure	Service and access platforms
	8 MT		
	23 MT		
Total Work	57 MT	Duration - 6 Week for each Set including assembly	



Project : EPC Services for Acrylics / Structure



Project : VT100, Ecotech120, VT140, VT180, VT260

Client : Ammann India Pvt. Ltd.

Our Roll

- Fabrication of Structure as per drawing, Scope of work - fabrication, blasting, Galvanizing / Powder coating.
- Assembly of all platforms, ladder and railing as per drawing within tolerances and get is certified from concern authorities.

Client	AMMANN India Pvt. Ltd.		
Project	VT100, ECOTECH120, VT140, VT180, VT260		
Scope	Weightage	Product Specification	Purpose of Requirement
Fabrication & Assembly of Concrete plants VT100, ECOTECH120, VT140, VT180, VT260 Including Extension frames, Platform, Ladder & Railings for Service and Maintainance Purpose	10 MT of each set	Service and Maintainance platform	Service and access platforms
Total Work	100 MT	Duration - 5 Sets per Month	



Project : VT100, Ecotech120, VT140, VT180, VT260



The background is a dark, industrial scene with complex metal structures, pipes, and walkways. A central white-bordered box contains the text. To the left of the box are two overlapping squares, one orange and one light blue. To the right of the box are two overlapping squares, one light blue and one orange.

COMPETENCY

ALLMARC INDUSTRIES PVT. LTD.



1,50,000 Square Foot area, and Expanding



More than 250 People Working



End to End Solution (From Design to Erection)



Latest CNC Punching, Bending, Cutting Machinery, CNC Laser cutting Machine for Plate and tube, Latest manual and robotic Welding Technology.



ISO 9001 : 2015 and ISO 45001 : 2018 Certified by TUV Nord.
Applied for EN 1090 – 2, Including ISO 3834 - 2

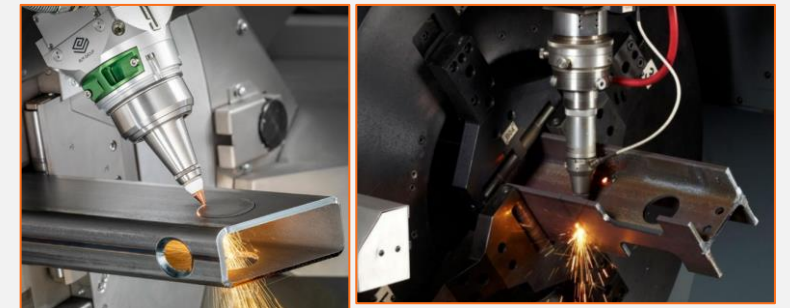
MACHINERY COMPETENCY



CNC Bending Machine 8.2 Mtr. Long. Make : Deratech



CNC Laser
tube, beam
Structure
cutting
Machine



Deratech
Sheet Laser
Cutting
Machine 6KW
(2.5 x 6.5 bed
capacity)

MACHINERY COMPETENCY



Deratech CNC Shearing Machine



CNC Bending Machine



CNC HD Plasma Machine



Mig Robotic welding system



CNC TruPunch Punching Machine

SERVICE COMPETENCY

Cost management

- Fabrication & formwork system costing
- Labour costing
- Productivity & Cycle time evaluation
- Reusability study

Fabrication solution and Manufacturing support

- Vendor evaluation & development
- Periodic visit to check procedure & Quality assurance.
- Mock up inspection
- Review of project production planning schedule

Design and consultation with 3D modelling & detailing service

- Design & GA drawings for structure & formwork system
- Evaluation of structure & formwork system
- Co-ordination & approval by concern authorities
- Methodology, planning & scheduling of execution
- 3D model & Shop fabrication drawing for ease of assembly job
- Re-engineering of formwork system

Site support with dedicated work force

- Enhance fabrication and assembly team with skilled workforce
- Site supervision with and without workforce
- Site training
- Effective implementation & review of procedure for fabrication, assembly system

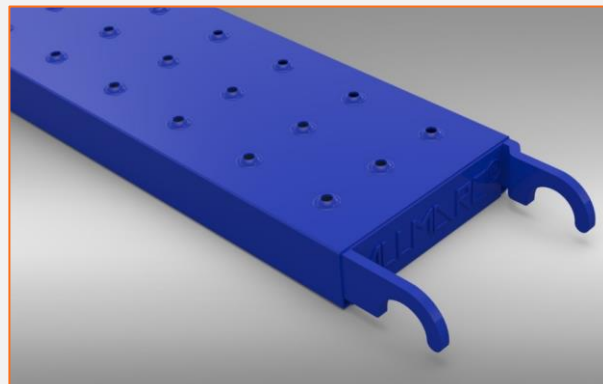
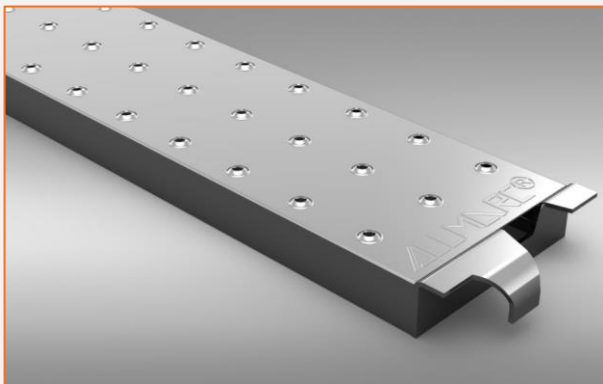
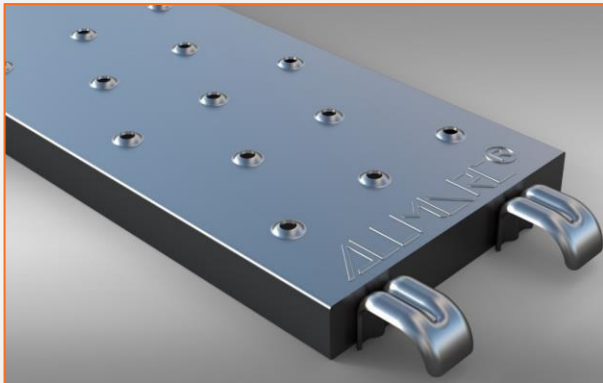
The background is a dark, industrial scene with complex metal structures, pipes, and walkways. A central white-bordered box contains the text. To the left of the box are two overlapping squares, one orange and one light blue. To the right of the box are two overlapping squares, one light blue and one orange.

OTHER PRODUCTS

ALLMARC INDUSTRIES PVT. LTD.

Scaffolding Walkway Planks

Wide Range of Scaffolding Walkway planks with Customisation as per client's Requirement



Antiskid Grip Strut®

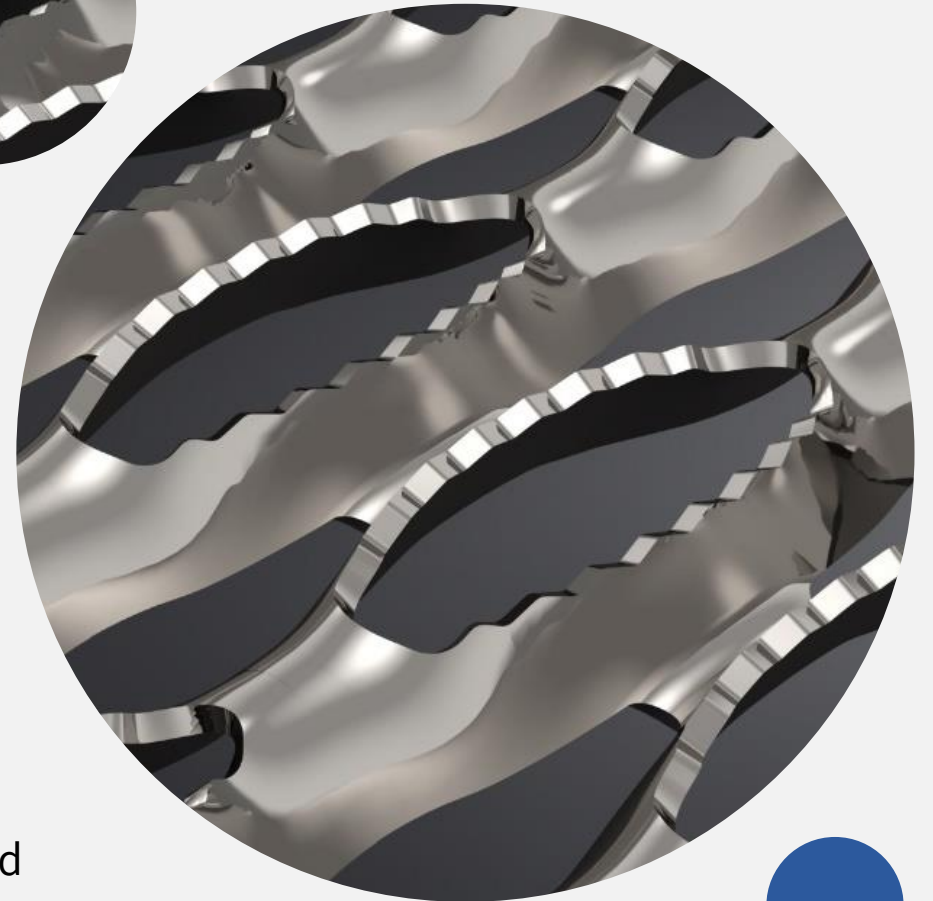
Grip Strut® Anti-Skid Safety Grating offers the best slip-resistant walking & working surfaces. The surface of the planks has diamond-shaped openings with serrated edges, making them slip-resistant in every direction under all conditions. This is a better and economic alternative against conventional Bar Gratings and Chequered Plate.

SAFER : Grip Strut offers extreme Slip-Resistance preventing accidents. Ideal for all sorts of Walking and Working Surfaces across all industries.

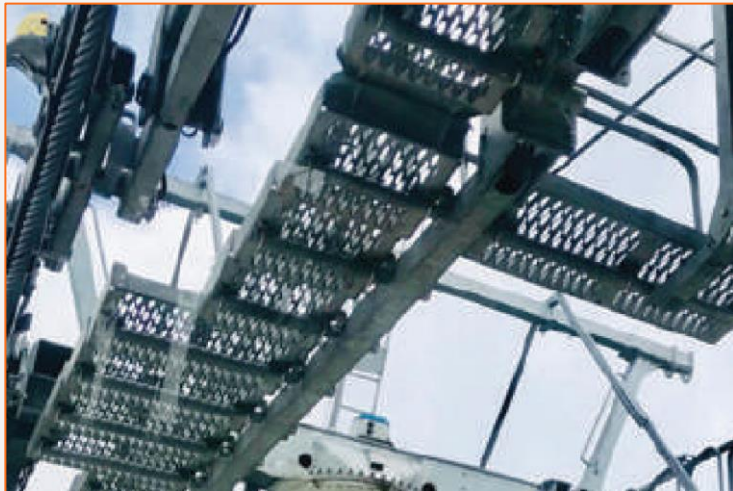
STRONGER : The strength-To-Weight ratio of Grip Strut is higher than Serrated Bar Gratings and Chequered Plates.

MONOLITHIC DESIGN : Because there are no joints and welds in the product it is very sturdy and durable.

FASTER : Faster Production (~10000 Sq.m/Month) and Installation Speed with on-time delivery guarantee.



Applications of Antiskid Grip Strut®

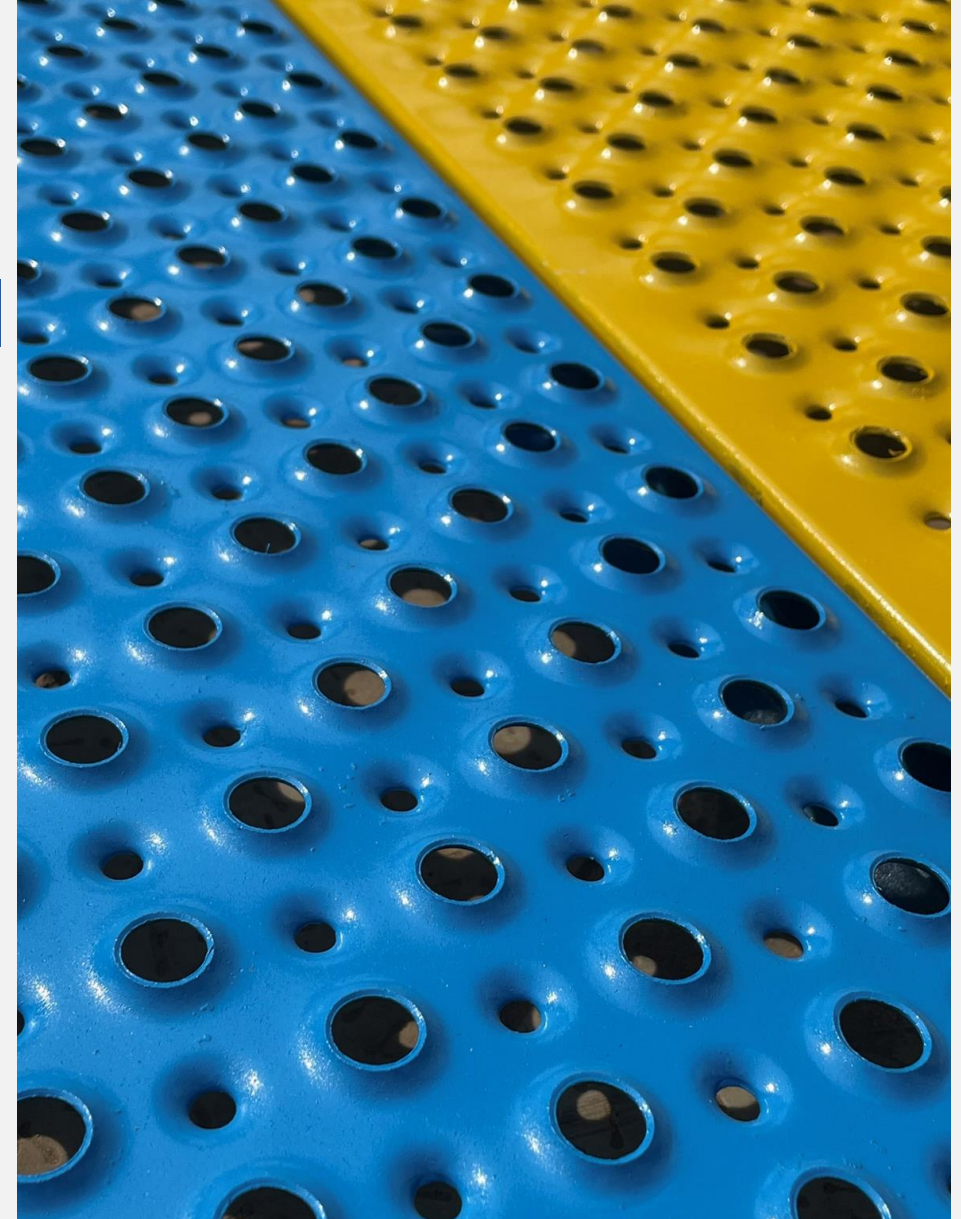


Universal Antiskid Surface

As the name suggests, Allmarc Universal Anti-skid is a Reversible surface. It is Unique because of its ability to serve as A safety grating on both sides: Upward and Downward The user can make the selection of the Sides (Upward or Downward) to be used based on their preferences of Dumping Ability, Visibility, Slip Resistance & Appearance of the grating.

Key Advantages

- Simple yet attractive design
- Highly Versatile in use
- Cost effective
- Variable Dumping ability
- Applicable to Industrial as well as
- General walking surfaces



STimber®

We have product which can replace all your wooden batten. We are providing wooden batten with Steel cover through out the length. **It will increase the repetition up to 200 Times**

Steel timber® is a unique concept utilising the combined strengths of steel and timber bound together with application in conventional construction formwork

Parameter	Capacity
Ultimate Moment Capacity	6.74 kN-m
Flexural Rigidity EI	135 kN/M ²
Ultimate Shear Strength	11.77 kN
Mid Span Deflection	14.16 mm at 8.0 kN



Our Steel Timbers are tested in Laboratory of IIT Chennai.

Thank you

For more details visit

www.allmarcindia.com

You can Write us

info@allmarcindia.com

